

Making RSPO Certification Work for Independent Smallholder in Indonesia



Singapore – October 30, 2012

Dani Rahadian P Hidayat


WWF Indonesia




How to avoid smallholders being unfairly excluded from the emerging market of RSPO certified palm oil.

How sustainable palm oil production can improve productivity and welfare of smallholders.

(RSPO Sabah 2011)

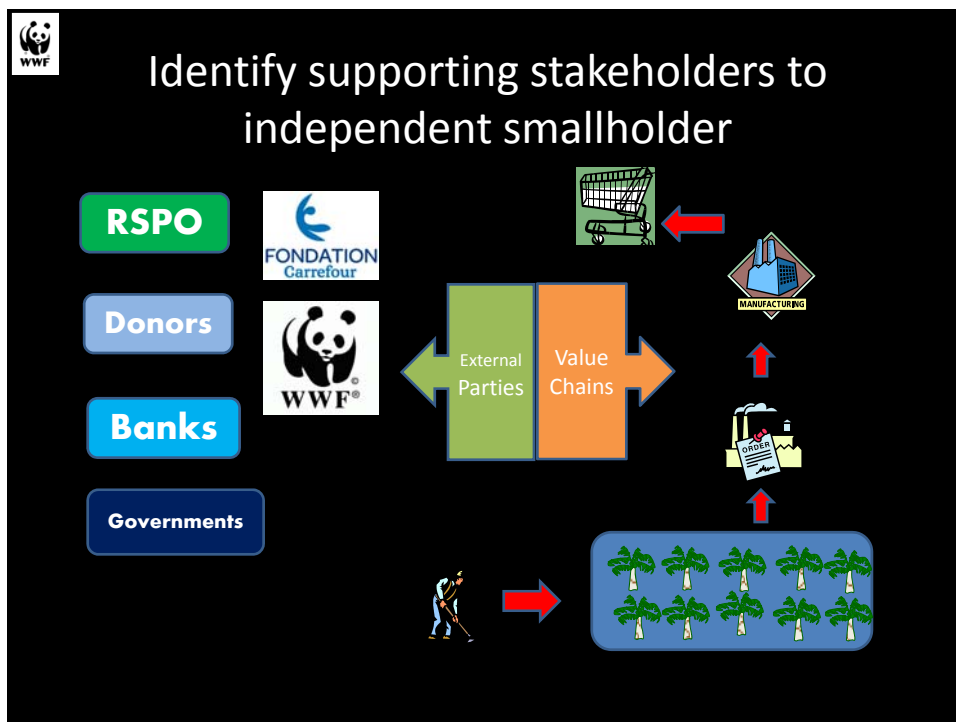
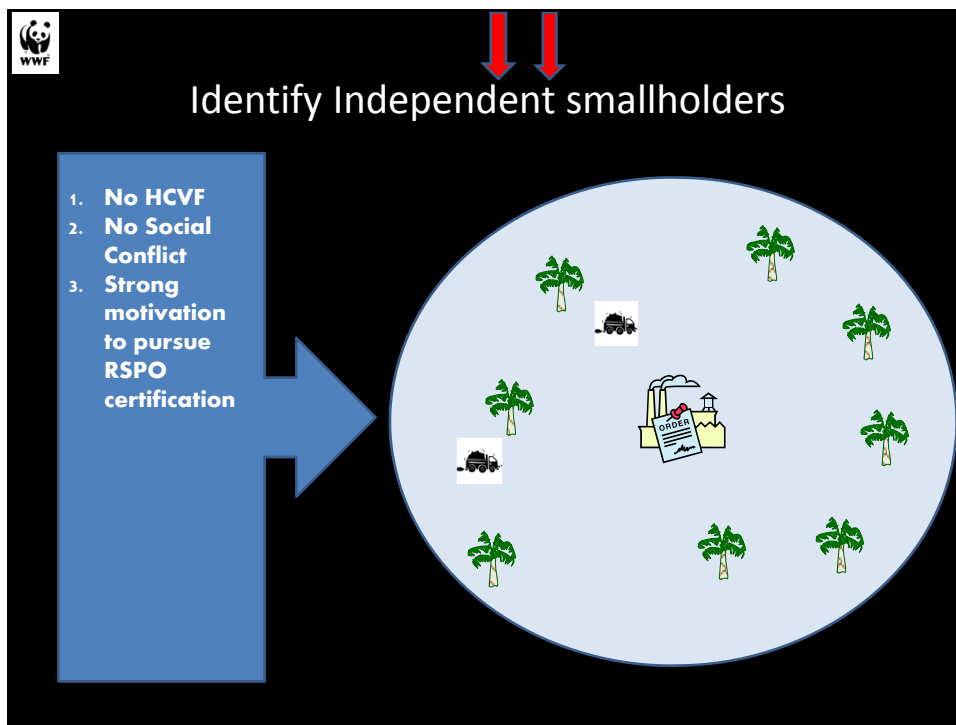


- *Preparation for certification* ←
- Sustainable practices implementation
- Next challenges



Preparation for Certification

Identify independent smallholder	<ul style="list-style-type: none"> • Environment: The plantation is not located in HCVF areas. • Social: The plantation is not engaging social conflict • Economic: The smallholder is willing to implement RSPO P&C, and it has strong motivation to pursue the certification
Identify supporting stakeholders to independent smallholder	<ul style="list-style-type: none"> • The smallholder group inside the transportation distance of RSPO member/certified mills • The RSPO member /certified mills is willing to assist the independent smallholder to implement P&C and committed for future procurement • The RSPO/member mills has a good access to the global value chains market (manufactures, retailers RSPO member) • There is financier support (donors, banks, credit union) • Government support • NGOs/facilitator support
Empowering organization capacity & sustainability implementation	<ul style="list-style-type: none"> • Forming a group certification • Forming and train the internal control system • Functioning the ICS through regular advance training and mentoring • Evaluate and improve ICS performance



 **Relevant stakeholders to independent smallholder focus group discussion**

Stakeholders presentation *Break out focus group discussion*



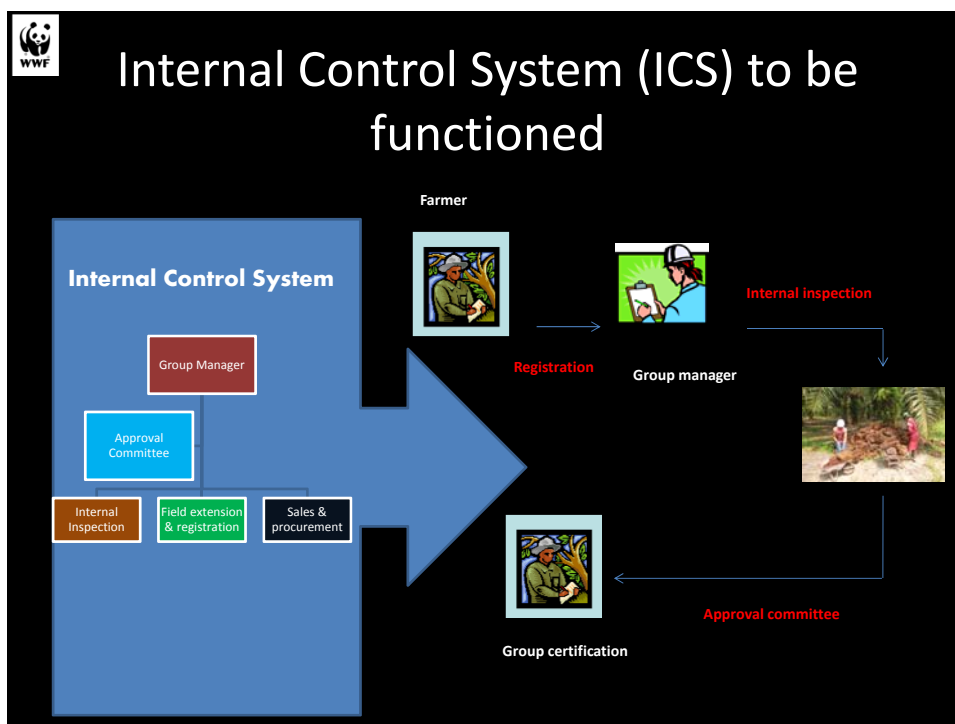
 **Empowering organization capacity & sustainability implementation**



Class discussion **Field Practices**

Internal Control System **Formed**

Pelatihan Internal Control System (ICS) - Rangka Sertifikasi ISO 22000 Untuk Petani Ikan



-
- The WWF logo is in the top left corner. The slide contains the following list:
- Preparation for certification
 - *Sustainable practices implementation* ←
 - Next challenges



Training and mentoring

No	Training
1	Internal control system (ICS) training
2	Strengthen farming business (SKE) and P&C RSPO
3	Training on limited pesticides utilization & B3 waste management
4	Training on land & water conservation
5	Training on health and safety (K3)
6	Training on first aid
7	Training on integrated pest management
8	Training on forest fire
9	Training on HCVF and SIA
10	Training on fruit harvesting and safety equipment
11	Training on effective fertilizing

WWF

Good practices implementation

FFB quality & quantity

=


WWF

Documentations

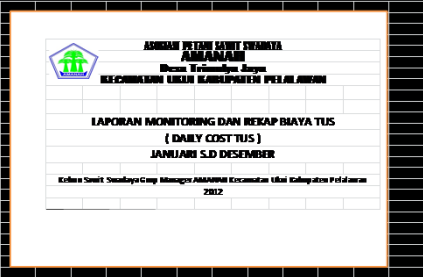
Independent Smallholder
Plantation

Legality document

Document management



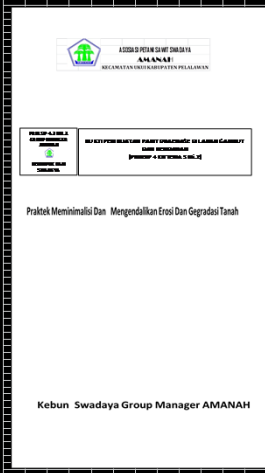
Good agriculture documents



ASIHAN PETANI SWADAYA AMANAH
 Dengan Terimakasih Sangat
 RESKOMUNIKASI UNTUK KEMERDEKAAN PERDIAN AMANAH

**LAPORAN MONITORING DAN REKAP BIAYA TUS
 (DAILY COST TUS)
 JANUARI S.D DESEMBER**

Kebun Swadaya Swadaya Group Manager AMANAH Kecamatan Uluwu Kabupaten Pringsewu
 2012



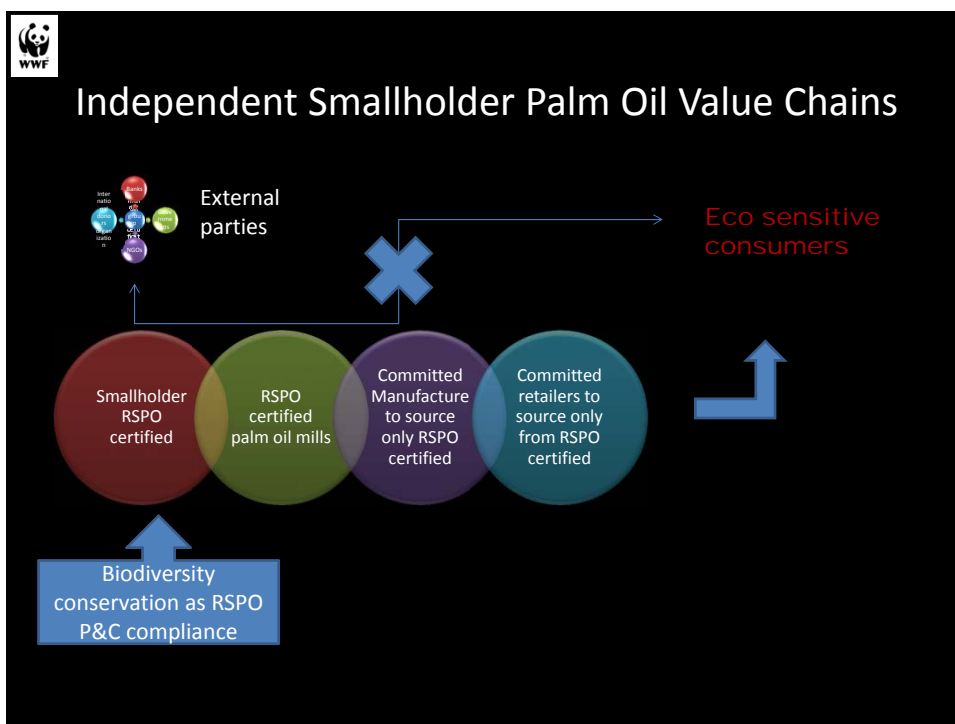
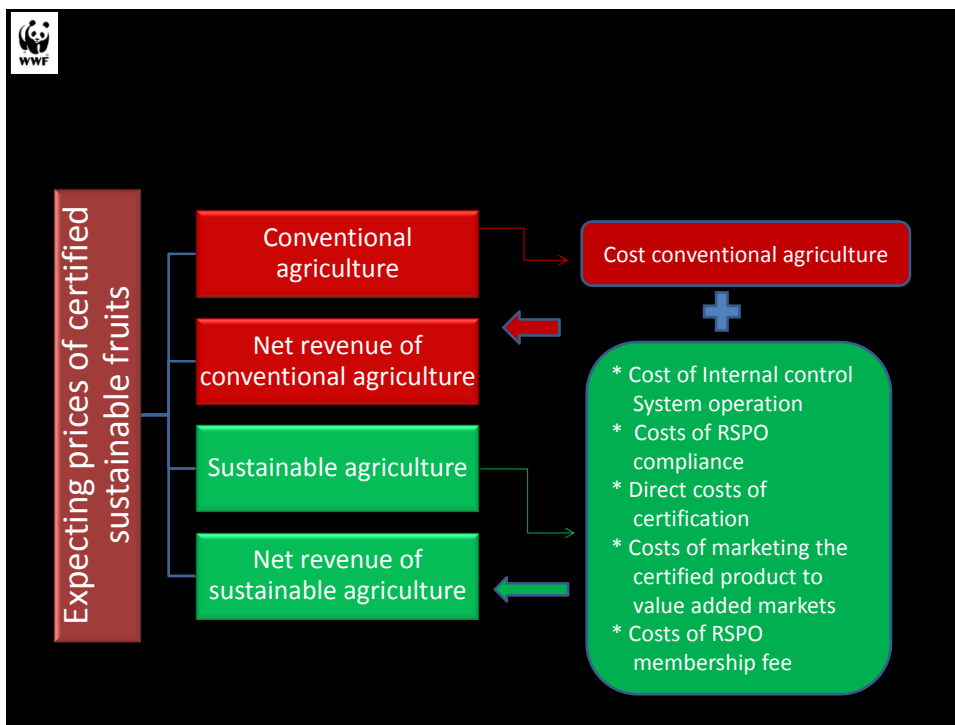
ASIHAN PETANI SWADAYA AMANAH
 RESKOMUNIKASI UNTUK KEMERDEKAAN PERDIAN AMANAH

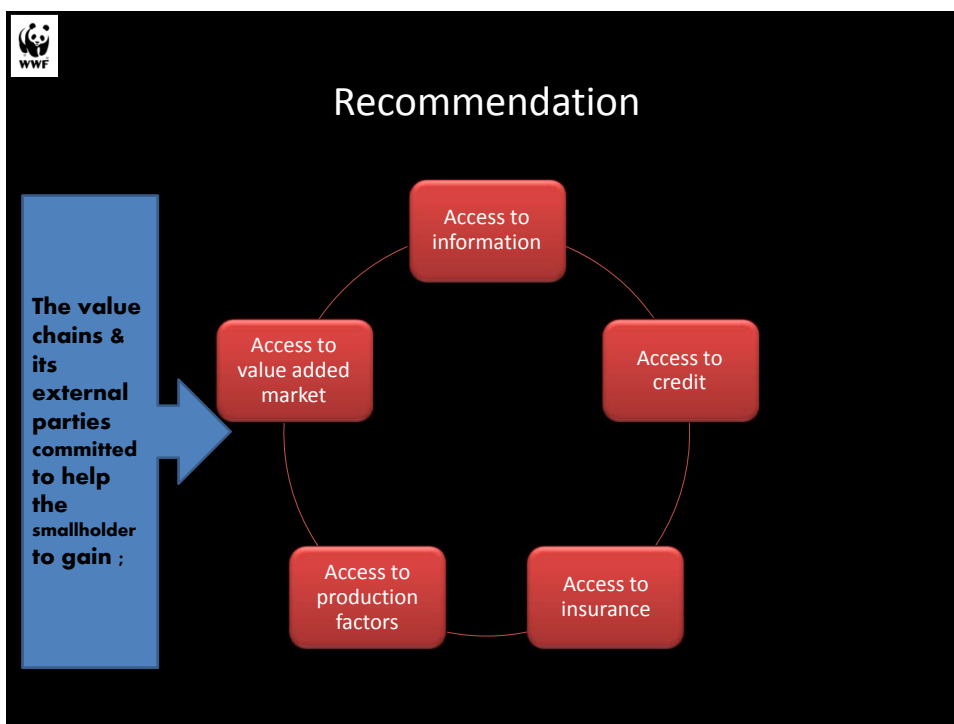
Praktek Minimalis Dan Mengendalikan Erosi Dan Gegradasi Tanah

Kebun Swadaya Group Manager AMANAH



- Preparation for certification
- Sustainable practices implementation
- *Next challenges* 







Thank you

For further information:

drahadian@wwf.or.id

www.wwf.or.id